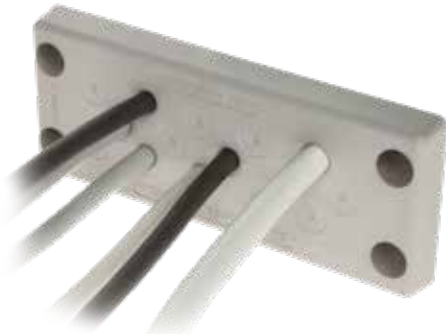




DES PDM 24 FT



Cable entry plates with internal frame and threaded inserts



FEATURES

- Rear installation with M4 threaded inserts
- Frontal closing cap to avoid dirt
- For large number of cables without connectors
- High strain relief thanks to the double membrane
- Cost-effective solution
- IP66 and Nema 4X* certified

The DES PDM 24 / FT is an innovative alternative to standard cable glands on electrical, electronic cabinets and equipment. The cable is pushed through the front membrane, whilst the second membrane increases the strain relief and liquid resistance.

They are equipped with threaded inserts for M4 screws and with front closing caps, which allow assembly from the rear of the frame and keep the product clean from the front, preventing dirt from depositing in the screw seats.

Material: TPE, halogens and silicones free

Flammability: self-extinguishing acc. to UL94-V0

Temperature: -40°C... +110°C (static)

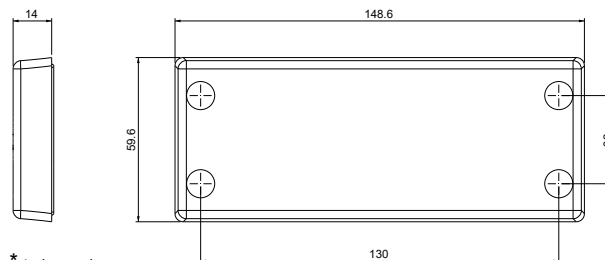
RELATED PRODUCTS

- IFP plugs (page 92)
- DES PDM caps (page 92)
- HY360 hydraulic punch driver (page 139)
- PF/PFX cable entry system plates (from page 140)

Black version upon request

	Model	Code	Nr. Cables	Ø Cable min/max (mm)	Dimensions (mm)		Pcs (/pack)
					Cut-out	Plate	
NEW	DES PDM 24/3G FT	1732212403	3	18 / 26	112 x 36	148,6 x 59,6	10
	DES PDM 24/12G FT	1732212412	12	9 / 16			
DES PDM 24/14G FT	1732212414	10	2,8 / 6,5 4				
DES PDM 24/15G FT	1732212415	15	6,8 / 12				
DES PDM 24/16G FT	1732212416	8	2,8 / 6,5				
		4	4,4 / 9,7				
		2	8,6 / 16,2				
		2	14,5 / 22				
DES PDM 24/17G FT	1732212417	6	2,8 / 6,5				
		6	4,6 / 10,2				
		5	8,6 / 16,2				
DES PDM 24/25G FT	1732212425	12	2,8 / 6,5				
		7	4,4 / 9,7				
		6	6,8 / 12				
NEW	DES PDM 24/26G FT	1732212426	26	4,6 / 10			
	DES PDM 24/32G FT	1732212432	21	2,8 / 6,5			
8			4,6 / 10,2				
3			6,8 / 12				
DES PDM 24/42G FT	1732212442	42	2,8 / 6,5				
DES PDM 24/124G FT	1732213421	120	1,75/4,7 4	2,3/6			

Dimensions (mm)



* Indoor only



M4 threaded inserts



IP66
IP68

NEMA
12, 4X*

UL TYPE
12, 4X



ECOLAB

