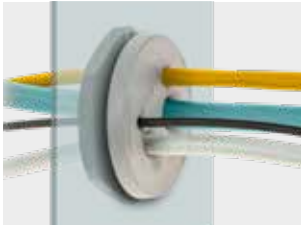




DES PDM M ATEX



Round cable entry plates with internal frame and double membrane



Double parallel membrane



FEATURES

- For large number of cables without connectors
- High strain relief thanks to the double membrane
- Cost-effective solution
- High IP grade (IP66-68), Nema 4X*
- Recommended tightening torque 8Nm

The cable entry plates series DES PDM M are used to save space and time as alternative to cable glands. They use the metric holes on cabinets or machinery and the nutlock guarantees a strong strain relief and highest water and dust protection. The cable is pushed through the front membrane, whilst the second membrane increases the strain relief and liquid resistance.

DES PDM M ATEX series can be used in zone 2 and 22.

Material: TPE, halogens and silicones free

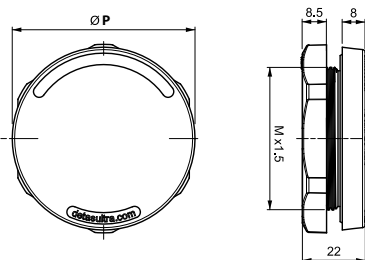
Flammability: self-extinguishing acc. to UL94-V0

Temperature: -40°C... +110°C (static)

RELATED PRODUCTS

- IFP plugs (page 92)
- HY360 hydraulic punch driver (page 139)

Dimensions (mm)



Model	Code	Nr. Cables	Ø Cable min / max (mm)	M x 1,5	Dimensions		Pcs (/pack)
					Ø P (mm)	H (mm)	
NEW DES PDM M20A/2G	1732332002	2	2 / 5,5	M20	36	7	10
DES PDM M20A/3G	1732332003	3	2 / 5				
DES PDM M20A/4G	1732332004	4	2 / 4,5				
DES PDM M25A/4G	1732333204	3 1	2,6 / 6,5 5,5 / 12,5	M25	41	7	
DES PDM M25A/6G	1732333506	6	2,2 / 5				
DES PDM M32A/4G	1732333204	3 1	2,6 / 6,5 5,5 / 12,5	M32	46	7	
DES PDM M32A/4-2G	1732333242	4	3,5 / 8,8				
DES PDM M32A/7G	1732333207	7	2,6 / 6,5				
DES PDM M40A/8G	1732334008	4 4	2,6 / 6,5 4 / 10,2	M40	54	7	
DES PDM M40A/12G	1732334012	12	2 / 6				
DES PDM M50A/8G	1732335008	5 3	4,6 / 10,2 6,8 / 12,5	M50	64	8,5	
DES PDM M50A/10G	1732335010	7 2 1	2,8 / 6,5 4,6 / 10,2 14,5 / 22				
DES PDM M50A/12G	1732335012	4 8	2,8 / 6,5 4,6 / 10,2				
DES PDM M50A/19G	1732335019	19	2,8 / 6,5				
DES PDM M63A/6G	1732336306	3 3	4,6 / 10,2 10,9 / 20				
DES PDM M63A/9G	1732336309	1 3 4 1	2,6 / 6 4,6 / 10,2 8,6 / 16,2 10,9 / 20	M63	77	8,5	
DES PDM M63A/13G	1732336313	4 4 5	2,8 / 6 4,6 / 10,2 9,5 / 16,2				
DES PDM M63A/14G	1732336314	14	5 / 10				
DES PDM M63A/35G	1732336335	35	2,6 / 5,5				

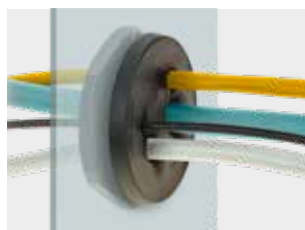
* Indoor only



DES PDM M ATEX



Round cable entry plates with internal frame and double membrane



Double parallel membrane



FEATURES

- For large number of cables without connectors
- High strain relief thanks to the double membrane
- Cost-effective solution
- High IP grade (IP66-68), Nema 4X*
- Recommended tightening torque 8Nm

The cable entry plates series DES PDM M are used to save space and time as alternative to cable glands. They use the metric holes on cabinets or machinery and the nutlock guarantees a strong strain relief and highest water and dust protection. The cable is pushed through the front membrane, whilst the second membrane increases the strain relief and liquid resistance.

DES PDM M ATEX series can be used in zone 2 and 22.

Material: TPE, halogens and silicones free

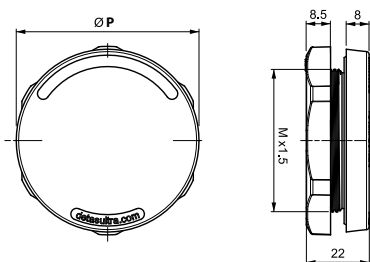
Flammability: self-extinguishing acc. to UL94-V0

Temperature: -40°C... +110°C (static)

RELATED PRODUCTS

- IFP plugs (page 92)
- HY360 hydraulic punch driver (page 139)

Dimensions (mm)



	Model	Code	Nr. Cables	Ø Cable min / max (mm)	M x 1,5	Dimensions		Pcs (/pack)
						Ø P (mm)	H (mm)	
NEW	DES PDM M20A/2B	1732333005	2	2 / 5,5	M20	36	7	10
	DES PDM M20A/3B	1732333006	3	2 / 5				
	DES PDM M20A/4B	1732333007	4	2 / 4,5				
	DES PDM M25A/4B	1732333007	3	2,6 / 6,5	M25	41	7	
	DES PDM M25A/6B	1732333507	6	2,2 / 5				
	DES PDM M32A/4B	1732334205	3	2,6 / 6,5	M32	46	7	
	DES PDM M32A/4-2B	1732334252	4	3,5 / 8,8				
	DES PDM M32A/7B	1732334208	7	2,6 / 6,5				
	DES PDM M40A/8B	1732335009	4	2,6 / 6,5	M40	54	7	
	DES PDM M40A/12B	1732335007	12	2 / 6				
DES PDM M50A/8B	1732336009	5	4,6 / 10,2	M50	64	8,5		
DES PDM M50A/10B	1732336011	7	2,8 / 6,5					
DES PDM M50A/12B		2	4,6 / 10,2					
DES PDM M50A/19B	1	14,5 / 22						
DES PDM M63A/6B	1732337307	3	4,6 / 10,2					
DES PDM M63A/9B	1732337310	3	2,6 / 6					
		4	4,6 / 10,2					
		1	8,6 / 16,2					
DES PDM M63A/13B	1732337314	4	2,8 / 6					
		4	4,6 / 10,2					
		5	9,5 / 16,2					
DES PDM M63A/14B	1732337315	14	5 / 10					
DES PDM M63A/35B	1732337336	35	2,6 / 5,5					

* Indoor only



IP66
IP68

NEMA
12, 4X*

UL TYPE
12, 4X

