



## Large grommets for drives and service connectors

- ▶ Large grommets for panel connectors with diameters 20 and 22 mm, M12, M25, M23 flanges, square openable flanges, feedthrough, quick inserts for pneumatic, etc.
- ▶ Useful for quick connections without opening the electrical panel
- ▶ Customized solutions welcome



SPG WFP23



SPG WFQ20



SPG WFQ27



SPG WF12



SPG WF25



SPG W22

Model	Code	Application	Pcs /pack
SPG WFP23	1731020830	For M23 flanges	1
SPG WFQ20	1731020815	For squared openable flange □ 38 mm , hole Ø 20 mm (for M15 connectors)	
SPG WFQ27	1731020820	For squared openable flange □ 38 mm with hole Ø 27 mm (for M23 connectors)	
SPG WF12	1731020840	For M12 metric threads	
SPG WF25	1731020850	For M25 metric threads	
SPG W22	1731020810	For Ø 22 mm Panel connectors	

The SPG W grommets allow the integration of panel connectors/sockets (Ø 20 and 22 mm, M12, M25, M23 flanges, openable square flanges, feedthrough, quick inserts for pneumatics, etc.) directly on the DES frames.

The advantage is the modularity of the system that allows **quick connection** and **release** of cables (data, power, pneumatics, etc.) without opening the machine panel.

This plug-in system facilitates the design of increasingly modular machines.

### Technical data

**Material:** TPE, insert PP+GF

**Flammability:** self-extinguishing  
acc. to UL94-V0

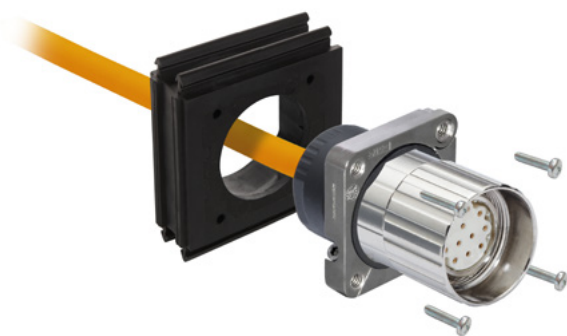
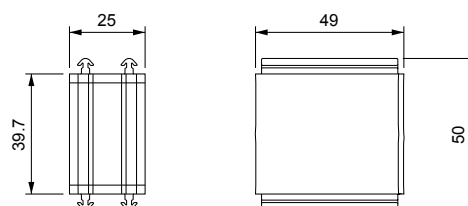
**Temperature:** -40°C... +110°C (static)

**Features:** halogens and silicones free

### Related products

DES 24	DESPRED	DES 24MX
DES 16	DESCLICK	DES 16M
DES 10	DES 24M	DES 16MX
DES Q	DES 24MX15	

### Dimensions [mm]



Compatible with a wide variety of panel sockets eg. sockets Ø 20/22 mm, M12, M25, M23 flanges, openable square flanges for M15 and M23 connectors, bulkheads and quick inserts for pneumatics, etc...

### some possible configurations

