



# DES PMU



## Round cable entry plates with double membrane for single cable

### FEATURES

- Metric sizes
- Quick to install
- Cost efficient solution
- High IP protection (IP66)
- Reduced thickness

The round metric DES PMU is an alternative to standard cable glands on electrical, electronic and telecommunication cabinets and equipment.

The cable is pushed through the front membrane, whilst the second membrane increases the strain relief and liquid resistance.

**Material:** TPE, halogens and silicones free

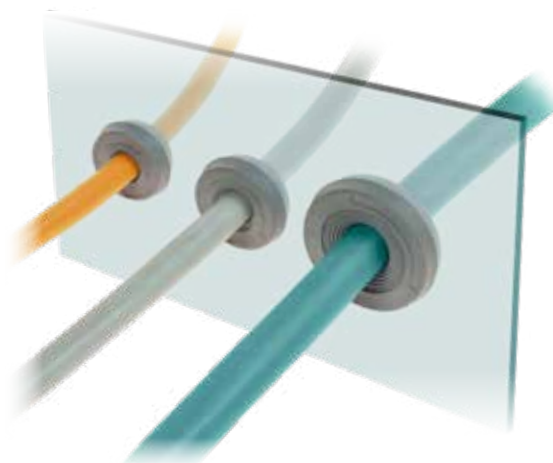
**Flammability:** self-extinguishing acc. to UL94-V0









**Temperature:** -40°C... +110°C (static)

**Wall thickness:** from 1,5 to 2,5 mm

### RELATED PRODUCTS

- IFP plugs (page 92)
- HY360 hydraulic punch driver (page 139)

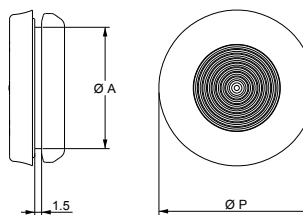


Model	Code	Nr. Cables	Ø Cable max (mm)	Dimensions (mm)		Pcs (/pack)
				Ø Cut-Out	Ø Plate	
 DES PMU 16G	1732060116	1	10	16,5	24	10
 DES PMU 20G	1732060120	1	13	20,5	29	
 DES PMU 25G	1732060125	1	15	25,4	34	
 DES PMU 32G	1732060132	1	22	32,5	40	
 DES PMU 16B	1732061116	1	10	16,5	24	
 DES PMU 20B	1732061120	1	13	20,5	29	
 DES PMU 25B	1732061125	1	15	25,4	34	
 DES PMU 32B	1732061132	1	22	32,5	40	



### Dimensions (mm)

Double parallel membrane



\* Indoor only



IP66

NEMA 12, 4X\*

UL TYPE 12, 4X



ECOLAB

UL94-V0



RoHS COMPLIANT