

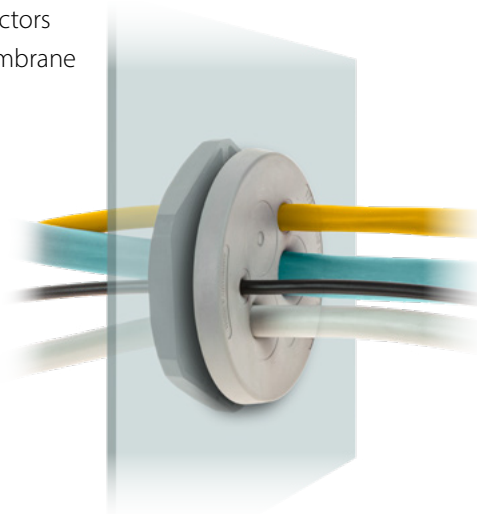


DES PDM M

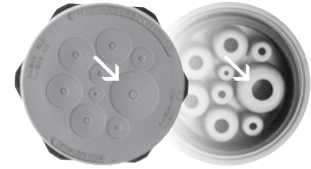


Round cable entry plates with internal frame and double membrane

- ▶ For large number of cables without connectors
- ▶ High strain relief thanks to the double membrane
- ▶ Cost efficient solution
- ▶ High IP grade IP66-68 NEMA 4X*
- ▶ Recommended tightening torque 8 Nm
- ▶ ATEX version on request (see group 7)



Double parallel membrane



Model	Code	Cable nr.	Ø Cable	Thread	Dimensions		Pcs /pack
			min/max [mm]		Ø P [mm]	H	
DES PDM M25/4G	1732032504	3 -	2,6 / 6,5	M25	41	7	10
		1 -	5,5 / 12,5				
DES PDM M25/6G	1732032506	6 -	2,2 / 5				
DES PDM M32/4G	1732033204	3 -	2,6 / 6,5	M32	46	7	
DES PDM M32/4-2G	1732033242	1 -	5,5 / 12,5				
DES PDM M32/7G	1732033207	7 -	2,6 / 6,5				
DES PDM M40/8G	1732034008	4 -	2,6 / 6,5	M40	54	7	
DES PDM M40/12G	1732034012	4 -	4 / 10,2				
DES PDM M40/12G	1732034012	12 -	2 / 6				
DES PDM M50/8G	1732035008	5 -	4,6 / 10,2	M50	64	8,5	
DES PDM M50/10G	1732035010	3 -	6,8 / 12,5				
		7 -	2,8 / 6,5				
DES PDM M50/12G	1732035012	2 -	4,6 / 10,2				
DES PDM M50/19G	1732035019	1 -	14,5 / 22				
DES PDM M50/12G	1732035012	4 -	2,8 / 6,5				
DES PDM M50/19G	1732035019	8 -	4,6 / 10,2				
DES PDM M63/6G	1732036306	3 -	4,6 / 10,2	M63	77	8,5	
DES PDM M63/9G	1732036309	3 -	10,9 / 20				
		1 -	2,6 / 6				
		3 -	4,6 / 10,2				
		4 -	8,6 / 16,2				
DES PDM M63/13G	1732036313	1 -	10,9 / 20				
DES PDM M63/14G	1732036314	4 -	2,8 / 6				
DES PDM M63/14G	1732036314	4 -	4,6 / 10,2				
		5 -	9,5 / 16,2				
DES PDM M63/35G	1732036335	14 -	5 / 10				
DES PDM M63/35G	1732036335	35 -	2,6 / 5,5				

The cable entry plates series DES PDM M are used to save space and time as alternative to cable glands. They use the metric holes on cabinets or machinery and the nutlock guarantees a strong strain relief and highest water and dust protection.

The cable is pushed through the front membrane, whilst the second membrane increases the strain relief and liquid resistance.

Technical data

Material: TPE

Flammability: self-extinguishing acc. to UL94-V0

Temperature: -40°C... +110°C (static)

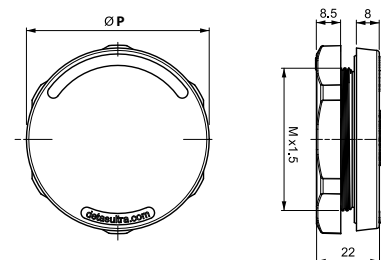
Features: halogens and silicones free

Related products

IFP plugs (page 85)

HY360 hydraulic punch driver (page 129)

Dimensions [mm]



* Indoor only



IP66
IP68

NEMA
12, 4X

UL TYPE
12, 4X



ECOLAB



ROHS
COMPLIANT



© Detas SpA - ISO9001/ ISO14001 certified company

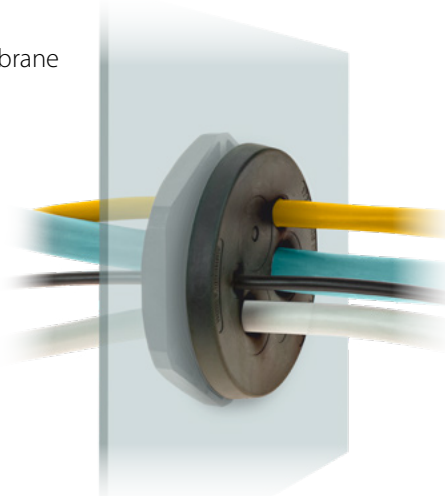
Via Trepontj, 29 - 25086 Rezzato BS - Italy - Tel. +39 030 2594120 - info@detasultra.com - www.detasultra.com





Round cable entry plates with internal frame and double membrane

- ▶ Metric sized
- ▶ High strain relief thanks to the double membrane
- ▶ Cost efficient solution
- ▶ High IP grade IP66-68 NEMA 4X*
- ▶ Recommended tightening torque 8 Nm
- ▶ ATEX version on request (see group 7)



Double parallel membrane



NEW

Model	Code	Cable nr.	Ø Cable	Thread	Dimensions		Pcs /pack
			min/max [mm]		Ø P [mm]	H	
DES PDM M25/4B	1732033504	3 - 1 -	2,6 / 6,5 5,5 / 12,5	M25	41	7	10
DES PDM M25/6B	1732033507	6 -	2,2 / 5				
DES PDM M32/4B	1732034205	3 - 1 -	2,6 / 6,5 5,5 / 12,5	M32	46	7	
DES PDM M32/4-2B	1732034252	4 -	3,5 / 8,8				
DES PDM M32/7B	1732034208	7 -	2,6 / 6,5				
DES PDM M40/8B	1732035009	4 - 4 -	2,6 / 6,5 4 / 10,2	M40	54	7	
DES PDM M40/12B	1732034013	12 -	2 / 6				
DES PDM M50/8B	1732036009	5 - 3 -	4,6 / 10,2 6,8 / 12,5	M50	64	8,5	
DES PDM M50/10B	1732036011	7 - 2 - 1 -	2,8 / 6,5 4,6 / 10,2 14,5 / 22				
DES PDM M50/12B	1732036013	4 - 8 -	2,8 / 6,5 4,6 / 10,2				
DES PDM M50/19B	1732036020	19 -	2,8 / 6,5				
DES PDM M63/6B	1732037307	3 - 3 -	4,6 / 10,2 10,9 / 20	M63	77	8,5	
DES PDM M63/9B	1732037310	1 - 3 - 4 - 1 -	2,6 / 6 4,6 / 10,2 8,6 / 16,2 10,9 / 20				
DES PDM M63/13B	1732037314	4 - 4 - 5 -	2,8 / 6 4,6 / 10,2 9,5 / 16,2				
DES PDM M63/14B	1732037315	14 -	5 / 10				
DES PDM M63/35B	1732037336	35 -	2,6 / 5,5				

The cable entry plates series DES PDMU are used to save space and time as alternative to cable glands. They use the metric holes on cabinets or machinery and the nutlock guarantees a strong strain relief and highest water and dust protection.

The cable is pushed through the front membrane, whilst the second membrane increases the strain relief and liquid resistance.

Technical data

Material: TPE

Flammability: self-extinguishing acc. to UL94-V0

Temperature: -40°C... +110°C (static)

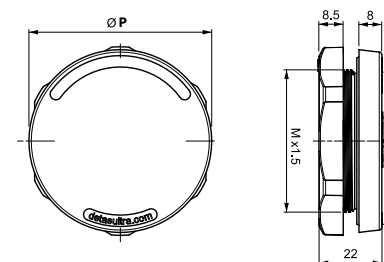
Features: halogens and silicones free

Related products

IFP plugs (page 85)

HY360 hydraulic punch driver (page 129)

Dimensions [mm]



* Indoor only



IP66
IP68

NEMA
12, 4X

UL TYPE
12, 4X



ECOLAB



ROHS
COMPLIANT

