

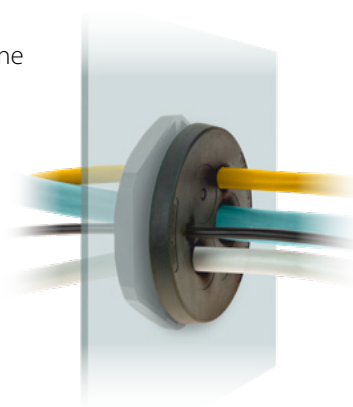


# DES PDM M ATEX



## Round cable entry plates with internal frame and double membrane

- ▶ For large number of cables without connectors
- ▶ High strain relief thanks to the double membrane
- ▶ Cost-effective solution
- ▶ High IP grade (IP66-68), Nema 4X\*
- ▶ Recommended tightening torque 8Nm



Double parallel membrane



Model	Code	Cable nr.	Ø Cable	Thread	Dimensions		Pcs /pack
			min/max [mm]		x1.5	Ø P [mm]	
● DES PDM M25A/6G	1732332506	6 -	2,2 / 5		M25	46	1
● DES PDM M25A/6B	1732333507						
● DES PDM M32A/4G	1732333204	3 -	2,6 / 6,5		M32	46	
● DES PDM M32A/4B	1732334205		1 - 5,5 / 12,5				
● DES PDM M32A/4-2G	1732333242	4 -	3,5 / 8,8		M32	46	
● DES PDM M32A/4-2B	1732334252						
● DES PDM M32A/7G	1732333207	7 -	2,6 / 6,5		M40	54	
● DES PDM M32A/7B	1732334208						
● DES PDM M40A/8G	1732334008	4 -	2,6 / 6,5		M40	54	
● DES PDM M40A/8B	1732335009		4 - 4 / 10,2				
● DES PDM M50A/8G	1732335008	5 -	4,6 / 10,2		M50	64	
● DES PDM M50A/8B	1732336009		3 - 6,8 / 12,5				
● DES PDM M50A/10G	1732335010	7 -	2,8 / 6,5		M50	64	
● DES PDM M50A/10B	1732336011		2 - 4,6 / 10,2				
● DES PDM M50A/12G	1732335012	8 -	2,8 / 6,5		M50	64	
● DES PDM M50A/12B	1732336013		8 - 4,6 / 10,2				
● DES PDM M50A/19G	1732335019	19 -	2,8 / 6,5		M50	64	
● DES PDM M50A/19B	1732336020						
● DES PDM M63A/6G	1732336306	3 -	4,6 / 10,2		M63	77	
● DES PDM M63A/6B	1732337307		3 - 10,9 / 20				
● DES PDM M63A/9G	1732336309	1 -	2,6 / 6		M63	77	
● DES PDM M63A/9B	1732337310		3 - 4,6 / 10,2				
● DES PDM M63A/13G	1732336313	4 -	2,8 / 6		M63	77	
● DES PDM M63A/9B	1732337310		4 - 8,6 / 16,2				
● DES PDM M63A/14G	1732336314	5 -	9,5 / 16,2		M63	77	
● DES PDM M63A/14B	1732337315		1 - 10,9 / 20				
● DES PDM M63A/35G	1732336335	14 -	5 / 10		M63	77	
● DES PDM M63A/35B	1732337336						
● DES PDM M63A/35G	1732336335	35 -	2,6 / 5,5		M63	77	
● DES PDM M63A/35B	1732337336						

The cable entry plates series DES PDM M are used to save space and time as alternative to cable glands. They use the metric holes on cabinets or machinery and the nutlock guarantees a strong strain relief and highest water and dust protection.

The cable is pushed through the front membrane, whilst the second membrane increases the strain relief and liquid resistance.

**DES PDM M ATEX series can be used in zone 2 and 22 according to IEC 60079-10.**

### Technical data

**Material:** TPE

**Flammability:** self-extinguishing acc. to UL94-V0

**Temperature:** -40°C... +110°C (static)

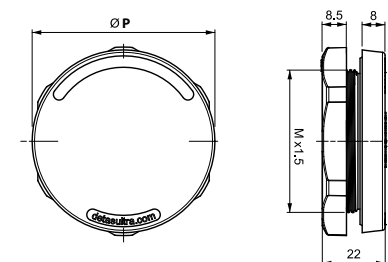
**Features:** halogens and silicones free

### Related products

IFP plugs (page 85)

HY360 hydraulic punch driver (page 129)

Dimensions [mm]



\* Indoor only



IP66  
IP68

NEMA  
12, 4X\*

UL TYPE  
12, 4X



ECOLAB



RoHS  
COMPLIANT

