

**DETASULTRA.COM**

# **SOLUTIONS AROUND THE CABLE**

# CABLE ENTRY SYSTEMS

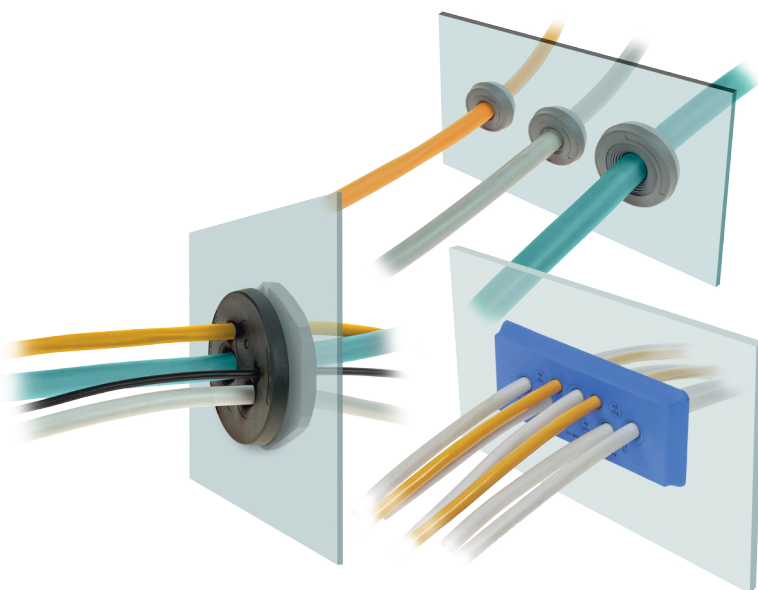


## DES cable entry frames for cables with or without connectors.

DES cable entry systems family allows cables with and without connectors with diameter from 2 to 65mm to be routed into machines, electrical cabinet and other devices, guaranteeing up to IP66, NEMA4X protection. The highest manufacturing quality is certified by UL, Loyds Register, Ecolab, and EN45545 HL3.

## Cable entry system plates.

The DES PM and PDM are cable entry system plates for cables without connectors. These are smart solutions to connect parts of machines or cabinets in a quick and reliable manner. For just one cable or up to 72 cables, round, square and rectangular from 2 to 30 mm cable diameter. Easy and cost effective solution for any application.



UL TYPE  
12, 4X



IK10



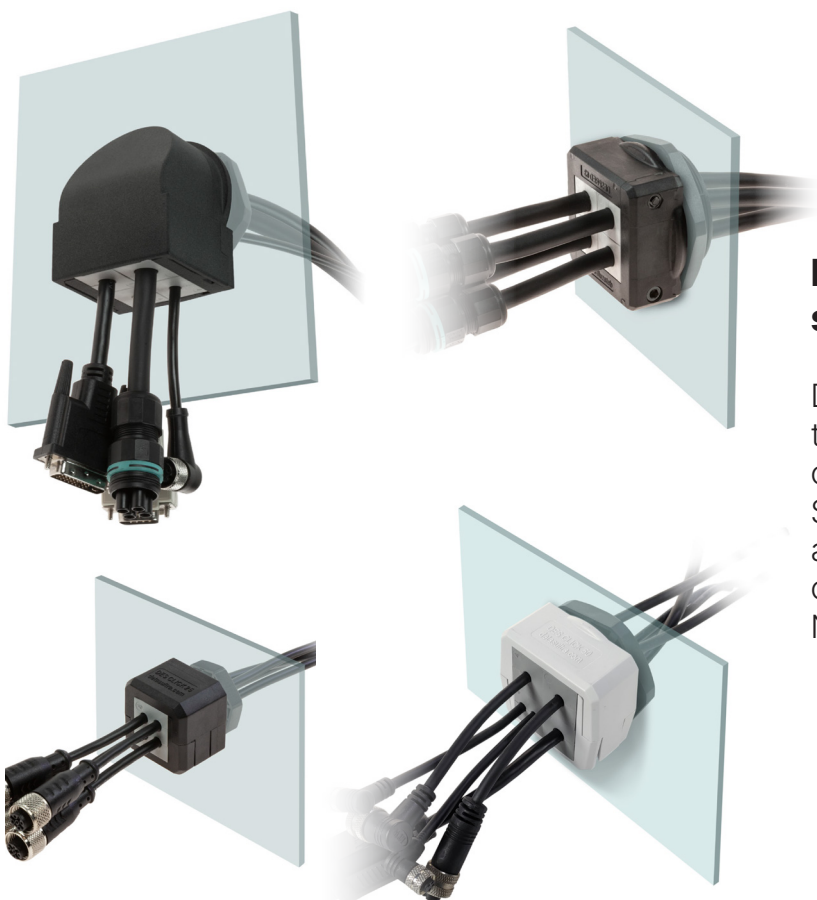
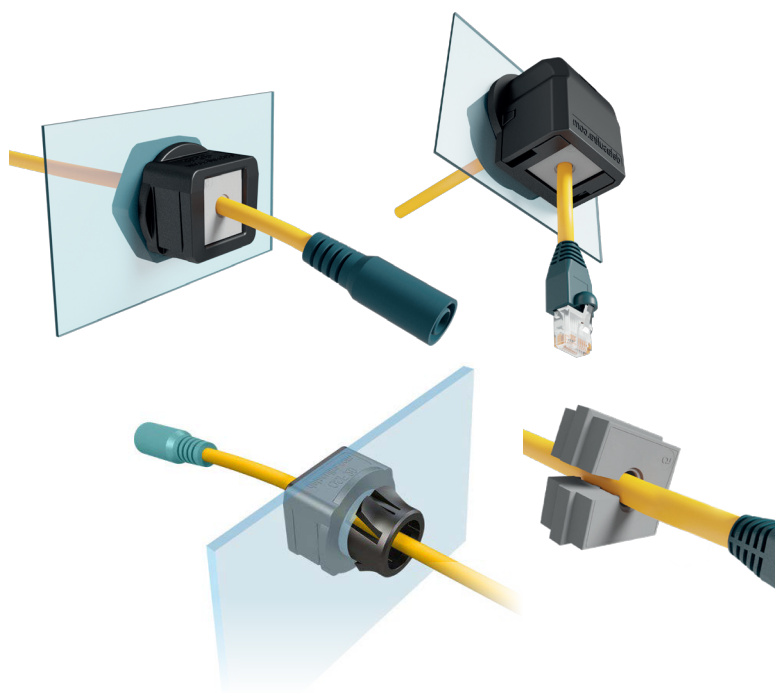
ECOLAB



# DIVISIBLE CABLE GLANDS

## **OSF Series - splittable cable glands for cables with or without connectors.**

OSF split cable glands are available in 4 standard metric sizes: M16, M20, M25 and M32. OSF can be equipped with the small SPC cable grommets - single and multiple for cables diameters from 2 to 14 mm. OSF IP54 family is available with locknut, for snap mounting and with 90° cable entry.



## **DESCCLICK & DESPRED Series - splittable cable glands.**

Divisible cable gland with metric threads up to IP66, Nema 4x with all the combinations of grommets. This series is compatible with SPP and SPG grommets for almost all applications which guarantee highest cable concentration in small space with IP66 and Nema4X protection.







## Cable fixing and strain relief modules.

The AP series strain relief modules are used in electrical cabinets or panels to help cables to be fixed and organized. They are also used to comply with the EN62444.

The cables can be fastened with normal or Velcro® ties.

Spacers can also be installed for two-level applications.

## EMC shielding.

The interconnecting cables between equipments inside electrical panels or machinery are the main way how the interference (EMI) propagates into the external environment surrounding the equipment. A classic example is frequency converters and their connectors.

MS series shielding clamps are the important EMC solution for the performance of the electrical system without disturbances.

The wide choice of models and affordable cost make these cable shielding systems very attractive and easy to install.

